

PROGRAMMABLE AC/DC POWER SOURCE



APS-1102

FEATURES

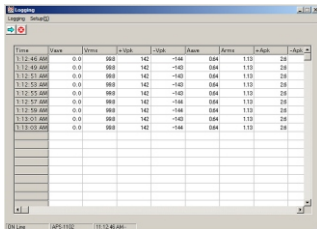
- 5.7" Large LCD Display
- Output Capacity : 750VA (for AC 100V Input)/1kVA (for AC 200V Input)
- Output Modes : AC and AC+DC Combined with any of the four signal sources
- Signal Sources : Internal (INT), External (EXT), Internal + External(ADD) and Synchronization (SYNC)
- Arbitrary Waveform Power Output
- Power Amplifier of External Signal
- Measurement Functions : Voltage, Current, Power, Frequency, Power Factor, CF, and Harmonic Current
- Capacitor Input Load Supported
- Sequence Function Allows Programming of Output Patterns
- Limiter Function (Upper/Lower Limits Function)
- 30 Sets of SAVE/RECALL Memories
- Output On/Off Switch
- USB Host as Standard for Remote Control



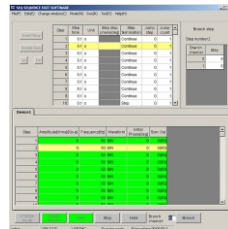
The APS-1102 is not only in the role as a precision AC/DC power supply but also a powerful analyzer, containing abundant features for the testing and characteristic analysis of power supplies, electronic devices, components and modules. Besides providing AC/DC power, APS-1102 also allows free programming of outputs for the simulation of a power source with abnormal variations. The instantaneous interruption, frequency sweeping, voltage sweeping and arbitrary waveforms of power source can be easily generated in accordance with the test requirements. The output function includes two main modes, AC and AC + DC. Each mode can be combined with any of the four signal sources, internal(INT), external(EXT), internal+external(ADD), and synchronization, to give an ultimate flexibility of power source setting.

The measurement functions, including Voltage, Current, Power, Frequency, Load power factor, Load crest factor and Harmonic current, are provided to monitor the output status in a real time manner. The measurement of Inrush Current, which occurs during power-on of a capacitor load, can be done easily. All these measurement readings and settings are displayed on a 5.7" CD screen simultaneously. APS-1102 includes a multi-functional and user-friendly software, which supports the remote control of panel operations, Sequence editing and execution, Arbitrary waveform editing and transfer, and Data logging via USB interface.

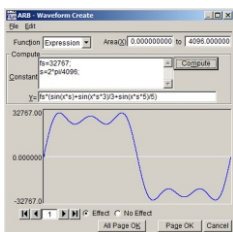
A universal AC power outlet is available on the front panel to accommodate almost all types of plugs used in most of the countries. With the capacity of 1kVA power and weighting of 20 lbs, APS-1102 provides powerful test and analysis features all in a comparatively compact and light-weight box.



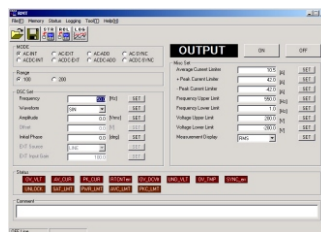
A. Logging of Measurement Values



B. Sequence Editing



C. Creation of Arbitrary Waveform



D. Remote Control Screen

APS-1102 includes a multi-functional and user-friendly software, which supports the remote control of panel operations, Sequence editing and execution, Arbitrary waveform editing and transfer, and Data logging. The remote control software is included to perform the following functions via USB interface : A. Data logging , B. Sequence editing and execution, C. Arbitrary waveform editing and transfer, D. Remote control of panel operations

APPLICATIONS

- R & D and Testing of wide variety but small quantity power supply manufacturers
- R & D and Testing of wide variety and compact consumer device manufacturers
- Testing of battery-powered modules
- Used as the power source for relay and switch characteristic testing
- Used as the power source for product inspection lines of devices in wide variety
- Used as the power source for LCD or battery formation

APS-1102

GW INSTEK
Made to Measure Since 1975

SPECIFICATIONS

MAXIMUM OUTPUT CAPACITY	AC Input (100 ~ 180V) Input (180 ~ 250V) DC Input (100 ~ 180V) Input (180 ~ 250V)	750VA 1000VA 750W 1000W																														
OUTPUT VOLTAGE	AC 100V 200V DC 100V 200V	0.0V ~ 135.0V 0.0V ~ 270.0V -190.0V ~ +190.0V -380.0V ~ +380.0V																														
OUTPUT MAX. CURRENT	AC 100V 200V DC 100V 200V	10A 5A 10A 5A																														
OUTPUT MAXIMUM PEAK CURRENTS	100V 200V	40Apk 20Apk																														
FREQUENCY	Setting Range Setting Accuracy	1.0Hz ~ 550.0Hz ±100ppm																														
WAVEFORM	SINE WAVE SQUARE WAVE ARBITRARY WAVE (Up To 16 Types Can Be Saved) Output Voltage Distortion Rate	0.5% MAX(50Hz/60Hz)																														
LINE VOLTAGE REGULATION	0.2% MAXIMUM	Power input voltage 100V/120V/230V, no load ,rated output																														
LOAD VOLTAGE REGULATION RATE	0.5% MAXIMUM	At output terminal under no load and rated resistance load																														
MEASUREMENT	Frequency Counter RMS Volt-Meter(AC+DC) RMS Amp-Meter(AC+DC) Wattage Meter Load Power Factor Measurement Load Crest Factor Measurement External Synchronization Frequency Measurement Phase When Output Is On	<table border="1"> <thead> <tr> <th>RANGE</th> <th>RESOLUTION</th> <th>ACCURACY</th> </tr> </thead> <tbody> <tr> <td>1.0 ~ 550.0 Hz</td> <td>0.1Hz</td> <td>±100ppm(1Hz to 550Hz, 23±5°C)</td> </tr> <tr> <td>Full Scale 100V : 225.0Vrms</td> <td>0.1Vrms</td> <td>±0.5% of the full scale(at 23±5°C)</td> </tr> <tr> <td>Full Scale 200V : 450.0Vrms</td> <td>0.1Vrms</td> <td>±0.5% of the full scale(at 23±5°C)</td> </tr> <tr> <td>Full Scale 15.00A</td> <td>0.01Arms</td> <td>±1.0% of the full scale(at 23±5°C)</td> </tr> <tr> <td>Full Scale 1200W</td> <td>1W</td> <td>±2% of the full scale(at 23±5°C)</td> </tr> <tr> <td>0.00 ~ 1.00</td> <td>0.01</td> <td></td> </tr> <tr> <td>0.00 ~ 50.00</td> <td>0.01</td> <td></td> </tr> <tr> <td>38.0 ~ 525.0Hz</td> <td>0.1Hz</td> <td>±0.2Hz</td> </tr> <tr> <td>0.0°C ~ 359.9°C</td> <td>0.1°C</td> <td></td> </tr> </tbody> </table>	RANGE	RESOLUTION	ACCURACY	1.0 ~ 550.0 Hz	0.1Hz	±100ppm(1Hz to 550Hz, 23±5°C)	Full Scale 100V : 225.0Vrms	0.1Vrms	±0.5% of the full scale(at 23±5°C)	Full Scale 200V : 450.0Vrms	0.1Vrms	±0.5% of the full scale(at 23±5°C)	Full Scale 15.00A	0.01Arms	±1.0% of the full scale(at 23±5°C)	Full Scale 1200W	1W	±2% of the full scale(at 23±5°C)	0.00 ~ 1.00	0.01		0.00 ~ 50.00	0.01		38.0 ~ 525.0Hz	0.1Hz	±0.2Hz	0.0°C ~ 359.9°C	0.1°C	
RANGE	RESOLUTION	ACCURACY																														
1.0 ~ 550.0 Hz	0.1Hz	±100ppm(1Hz to 550Hz, 23±5°C)																														
Full Scale 100V : 225.0Vrms	0.1Vrms	±0.5% of the full scale(at 23±5°C)																														
Full Scale 200V : 450.0Vrms	0.1Vrms	±0.5% of the full scale(at 23±5°C)																														
Full Scale 15.00A	0.01Arms	±1.0% of the full scale(at 23±5°C)																														
Full Scale 1200W	1W	±2% of the full scale(at 23±5°C)																														
0.00 ~ 1.00	0.01																															
0.00 ~ 50.00	0.01																															
38.0 ~ 525.0Hz	0.1Hz	±0.2Hz																														
0.0°C ~ 359.9°C	0.1°C																															
EXTERNAL SIGNAL INPUT	Gain Setting Range	<table border="1"> <tbody> <tr> <td>100V range 0~200 times</td> <td>0.1</td> <td>± 5%</td> </tr> <tr> <td>200V range 0~400 times</td> <td>0.1</td> <td>± 5%</td> </tr> </tbody> </table>	100V range 0~200 times	0.1	± 5%	200V range 0~400 times	0.1	± 5%																								
100V range 0~200 times	0.1	± 5%																														
200V range 0~400 times	0.1	± 5%																														
OUTPUT MODE	ACINT Mode AC + DC - INT Mode AC - ADD Mode AC + DC - ADD Mode AC - EXT Mode AC + DC - EXT Mode AC - SYNC Mode AC + DC - SYNC Mode																															
MEMORY	Store/Recall 30 sets																															
POWER SOURCE	AC100V ~ 230V ±10% ; 50Hz / 60Hz ±2Hz																															
POWER CONSUMPTION/FACTOR	1.4kVA max / 0.95min (AC100V) ; 0.9min (AC200V)																															
INTERFACE	USB(USBTMC) Standard																															
DIMENSIONS & WEIGHT	258(W) X 176(H) X 440(D) ; Approx. 9.5 kg																															

Specifications subject to change without notice. PS-1102GD1DH

ORDERING INFORMATION

APS-1102 1kVA Programmable AC/DC Power Source

ACCESSORIES

User Manual x 1, Power Cord x 2, Ferrite Core (for USB Cord),
CD-ROM (Remote Control Software) x 1

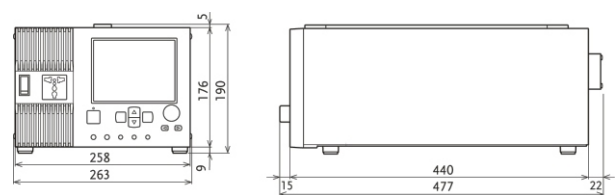
OPTIONAL ACCESSORIES

GRA-409 Rack Adapter Panel

FREE DOWNLOAD

Remote Control Software
LabView Driver

OUTLINE DRAWINGS



unit : mm

Global Headquarters

GOOD WILL INSTRUMENT CO., LTD.

No. 7-1, Jhongsing Road, Tusheng City, Taipei County 236, Taiwan
T +886-2-2268-0389 F +886-2-2268-0639
E-mail: marketing@goodwill.com.tw

China Subsidiary

INSTEK ELECTRONIC (SHANGHAI) CO., LTD.

8F, of NO.2 Building, No.889 Yishan Road, Shanghai China
T +86-21-6485-3399 F +86-21-5450-0789
E-mail: marketing@instek.com.cn

Malaysia Subsidiary

GOOD WILL INSTRUMENT (M) SDN. BHD.

27, Persiaran Mahsuri 1/1, Sunway Tunas,
11900 Bayan Lepas, Penang, Malaysia.
T +604-6309988 F +604-6309989
E-mail: sales@goodwill.com.my

U.S.A. Subsidiary

INSTEK AMERICA CORP.

3661 Walnut Avenue Chino, CA 91710, U.S.A.
T +1-909-5918358 F +1-909-5912280
E-mail: sales@instekamerica.com

Japan Subsidiary

INSTEK JAPAN CORPORATION

4F, Prosper Bldg, 1-3-3 Iwamoto-Cho Chiyoda-Ku,
Tokyo 101-0032 Japan
T +81-3-5823-5656 F +81-3-5823-5655
E-mail: info@instek.co.jp

Korea Subsidiary

GOOD WILL INSTRUMENT KOREA CO., LTD.

Room No.805, Ace Hightech-City B/D 1Dong,
Mullaee-Dong 3Ga 55-20, Yeongduengpo-Gu, Seoul, Korea
T +82 2 3439 2205 F +82 2 3439 2207
E-mail: gwinstek@gwinstek.co.kr

GW INSTEK

www.gwinstek.com